



NBPS Newsflash

April 2022

Greetings NBPS Team,

Even though we've had a brisk start, spring is finally here, and we can see budding of the leaves and flowers. Although we continue to be challenged by the impact of the pandemic, our NBPS team has persevered. You have been creative, compassionate, and consistent. Our students and their families are grateful for the individual dedication and understanding of the challenges we are all facing. The human condition is the driver of all things and how we interact with and treat one another is what we remember. Just think, average per gallon of gas: \$4.23, Federal interest rate up: .25%, a thank you with a smile: PRICELESS.

I am continually impressed with the resilience and commitment of our staff and students, and their ability to engage in the teaching and learning process. Our collective team has visited hundreds of classes and have shared over 1,000 pieces of insightful observations during the learning walks. It's exciting to see analysis and inquiry, student engagement, and instructional dialogue at work in environments that are truly stimulating learning.

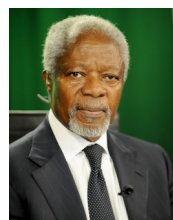
Our commitment to strengthen positive relationships with students and families has proven effective as we have increased communication with homes. Thank you for your efforts to educate and equip our parents with strategies on how to best support their children. Our collective focus remains on what's most important, student and staff safety and well-being, in parallel with enhancing the core instructional program.

Our FY23 Investment Priorities are consistent with previous years and will be presented at the April School Committee. The emphasis remains on how we will continue to move forward based on NBPS Strategic Plan goals and initiatives. Clarity, measurement, and accountability is how we enhance the overall teaching and learning process. We must continue to be collaborative and consistently and effectively communicate to support and accelerate student performance.

As part of our ESSER priorities, expanding pre-kindergarten programming for 3 and 4-year-olds alongside a robust early literacy program for grades pre-K to 5 is essential. Early education is the foundation of our school system as we cultivate our youngest students to become highly proficient in all areas. As always, thank you for your continued support.

Thomas Anderson,
Superintendent

*"Knowledge is power.
Information is liberating.
Education is the premise
of progress in every
society, in every family."
— Kofi Annan*



*"Students
don't care
how much
you know
until they
know how
much you
care."*

– J. C. Maxwell

INSIDE THIS ISSUE

Employee Spotlight: 2

Food Services Update: 3

Spring Step Challenge : 4

Job Fair: 5

Summer Camp Fair: 6

Adult Ed News: 7

Events: 8

Employee Spotlight

Joyce Spooner

Clerk

Jireh Swift Elementary School



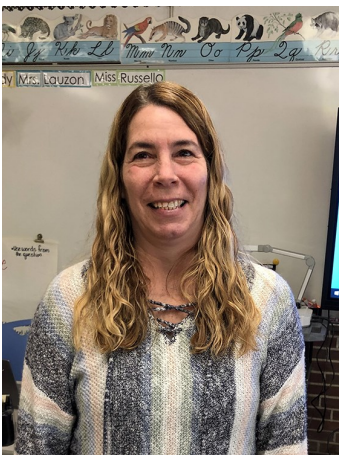
“Mrs. Joyce Spooner is the “Heart and Soul” of the Jireh Swift Elementary School. Mrs. Spooner is our amazing clerk who goes above and beyond every single day for the staff and the students here at Swift. Her day begins where she welcomes all students and ensures the day is ready and well prepared for all. Mrs. Spooner takes great pride in her work and is extremely knowledgeable when it comes to her job but is also very acclimated with others duties in the building. Mrs. Spooner knows each student and their families in the building and is so relatable that our families are very comfortable in speaking with her. In fact, most of our parents reach out to ask her questions and for assistance. Mrs. Spooner is always willing to help, she is always kind and courteous, she ensures children and families are treated with respect, as well as she always approaches all situations with a gentle demeanor. We could truly not do our jobs here at Swift without Mrs. Spooner as she truly is our great support.”

– Tonya Vitorina, Principal

Nicole Lauzon

Paraprofessional

Elwyn G. Campbell Elementary School



Campbell Principal Lisa Wheelden has nominated Nicole Lauzon, a Campbell paraprofessional for an Employee Spotlight “For the kindness and compassion she has shown to students at Campbell School. She has dedicated over 25 years of service to New Bedford Schools. Mrs. Lauzon is a collaborator and team player. She is always willing to support a student both behaviorally and academically. She has stepped in many times to assist administrators managing various behaviors. When interacting with students she has mastered being patient and calm while still holding the student accountable. A skill most valuable in this role. Mrs. Lauzon has continued her education through the JET Program, Journey Into Teaching and is now conquering the MTELs! Thank you, Mrs., Lauzon for your unwavering support toward our students at Campbell School. We appreciate you!”

– Lisa Wheelden, M.Ed., Principal

Food & Nutrition Services

Update

Robert Shaheen, Director x14257
rshaheen@newbedfordschools.org



Fresh Fruit and Vegetable Program:

Teacher Resource Cards Now Available
for Fresh Fruit and Vegetable Program!

Our Food Corps Service Members have created resource cards for teachers to use during the Fresh Fruit and Vegetable Program (FFVP) distribution to encourage students to try the FFVP items! The resource cards have various facts and discussion points about each fruit or vegetable offered and can be used to generate student interest in the fruit or vegetable of the day.

Teacher Resource Cards are available here:

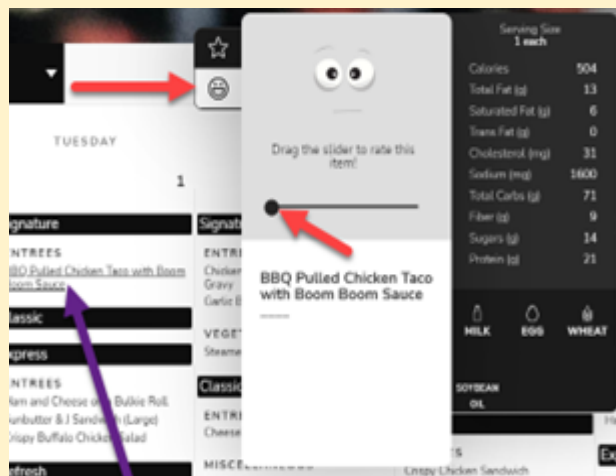
<https://www.newbedfordschools.org/cms/One.aspx?portalId=67022&pageId=35716247>

The Fresh Fruit and Vegetable Program (FFVP) is offered at all elementary schools in the district. Through this program the Food and Nutrition Services department offers a fresh fruit or vegetable twice a week to elementary school students sometime after lunch and before dismissal.

The goal of the program is to introduce children to fresh fruits and vegetables, to include new and different varieties, and to increase overall acceptability and consumption of fresh, unprocessed produce among children.

The FFVP menu is available online as part of each elementary school's menu:

<https://schools.mealviewer.com/district/NewBedfordPublicSchools,MA>



Calling Student Feedback on All Menu Items!

All Food and Nutrition Services menus are now available online. Did you know the menus have a feature that allows students to submit feedback about any menu item offered?

Simply hover over the menu item then click the smiley face and use the slider to submit feedback!



You are all invited to join our Spring Step Challenge!

Only employees who subscribe to our BCBS health insurance are able to participate.

- Enrollment period: April 4, 2022 – April 17, 2022
- Challenge begins: April 11, 2022
- Challenge ends: May 23, 2022 at 11:59 p.m.

Step challenge instructions are available on the district website

Click on this link to the [BENEFITS PAGE](#) to download.

To successfully complete this challenge, you will need to log 294,000 steps within 6 weeks, an average of 7,000 steps a day, using a pedometer, Fitbit® or other device to keep track of steps. Steps must be entered into ahealthyme.com, either on the website, through the **HealthyNow app**, or through a connected Fitbit® device, to be counted toward the challenge goal.

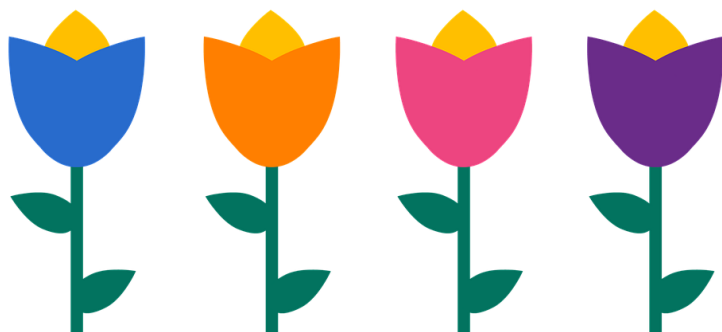
All employees and dependents that join the challenge will be entitled to the Fitbit Inspire 2 if they did not receive one on the previous challenge while supplies last!

Please contact **Marcia Tome** in the Benefits Office at 508-997-4511 Ext. 14355

or email mtome@newbedfordschools.org to claim your Fitbit.

Employees who complete the challenge will be eligible to receive a \$25.00 gift certificate.

Gift certificates will be issued to employees only.





NEW BEDFORD PUBLIC SCHOOLS TEACHER RECRUITMENT FAIR



SATURDAY, MAY 7 TH
9:00 A.M. - 12:00 P.M.
NORMANDIN MIDDLE SCHOOL
81 FELTON STREET NEW BEDFORD, MA
ON-SITE INTERVIEWS

- **Speak with principals** and other school leaders from our 25 schools.
- Find out **what principals are looking for** in teacher candidates.
- Arrange to **tour our schools** and our city.
- **Vacancies include** but are not limited to:
 - o Elementary Education
 - o Special Education
 - o English as a Second Language
 - o Middle and High School positions (Math, Science, Special Education)



For more information, contact
Kleidy Oliveira at
508-997-4511 ext. 14351 OR
ksoliveira@newbedfordschools.org



**SCAN THE QR CODE
TO VIEW & APPLY TO
OPEN POSITIONS**



@NBPublicSchools



/NewBedfordPublicSchools



NB-Public-Schools

www.newbedfordschools.org



New Bedford Public Schools Family Engagement Centers



Invites you!

SUMMER CAMP FAIR

Event Series

Food will be provided for students



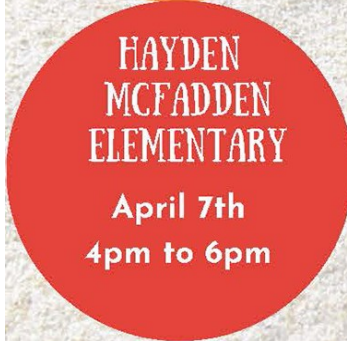
**NORMANDIN
MIDDLE SCHOOL**

April 14th
4pm to 6pm



**KEITH MIDDLE
SCHOOL**

May 23rd
4pm to 6pm



**HAYDEN
MCFADDEN
ELEMENTARY**

April 7th
4pm to 6pm



**GOMES
ELEMENTARY**

April 28th
4pm to 6pm



LEARN ABOUT ALL THE FUN NEW BEDFORD HAS TO OFFER FOR SUMMER 2022!

NBPS will have summer school this year, check with your school what options are available for your children.



ESOL Book Club spreads joy of reading aloud at home

NBPS Division of Adult Education's popular program brings books home for family reading

When Ms. Leta Phillips, an ESOL (English for Speakers of Other Languages) teacher of Advanced English Levels 6-7, created the Adult Learning Center's "On the Go Book Club," she had no idea of just how popular it would become. Its purpose was simple: introduce some of the best children's literature to ESOL parents and encourage family engagement. As it turns out, it is also rewarding – even students without children are joining the club for the opportunity it provides to learn some English in a fun, engaging way. Consequently, all ESOL students are invited to join the afternoon club and share their love of reading at home.



ESOL Instructor Leta Phillips (center, seated) with members of the NBPS Adult Learning Center's "On the Go Book Club" and their copies of "The Velveteen Rabbit" by Margery Williams. Student members read a selected children's book after learning its new vocabulary. Ms. Phillips models reading the story, and students bring home their copy of the book to read to their children.

The book club is organized into three stages. In the Pre-reading stage, Ms. Phillips concentrates on the new vocabulary words. At this time, the students are given a premade graphic organizer with the new word, a student-friendly definition, a picture, and a column where the student can write a translation into their own language. Students find this exercise a helpful resource when they are rereading the book later on at home. During the second stage, each student is given a book, so they can follow along as the teacher models engaging techniques to capture the listener's attention. During this time, Ms. Phillips asks questions to reinforce reading skills such as: prediction, drawing conclusions, retell, sequencing, etc. In the post-reading stage, students take their own book home to share with their family.

Ms. Phillips notes, "The books that we have read so far are: "Strega Nona" by Tomie dePaulo, "Yeh-Shen" (a Chinese Cinderella story) by Walt Disney, "The Fisherman and his Wife" by the Brothers Grimm, "The Velveteen Rabbit" by Margery Williams, "The Tale of Peter Rabbit" by Beatrix Potter, and "Skin Like Mine" by Latashia M. Perry. These books appeal to the students because they deal with authentic human emotions – love, loneliness, selfishness, respect, self-pride, etc. Moreover, they are multicultural, so the students appreciate that."

Ms. Phillips has expressed pleasant surprise with the genuine interest in the book club and its positive outcomes. Some students have shared their personal experiences in reading the books with their family. Jacqueline Guzman who has a 7-year-old daughter at the Gomes School said that her daughter looks forward to reading a new book with mommy each week. "She corrects my pronunciation of some of the English words. I don't mind because we are learning together," she said. Another ESOL student related that she reads the book with her husband, as it is a good way to improve their English together. Still another student prefers to rewrite the book in her notebook. She says that this helps her focus on the words and improves her spelling and writing skills. The Adult Learning Center's "On the Go Book Club" has been a very rewarding experience for both Ms. Phillips and her students. "The club will continue through the end of the year. Many more journeys into new worlds await us," she added. ★

NEW BEDFORD'S DAY OF KINDNESS



A DAY TO CELEBRATE AND ENCOURAGE ACTS OF KINDNESS, HOSTED BY HANNAH LIMA MISS NEW BEDFORD'S OUTSTANDING TEEN

APRIL 01, 2022

ANYWHERE, ANY PLACE, ANY KIND ACT!

SHARE YOURS AT #NBDAYOFKINDNESS




The New Bedford High School Drama Club
presents

GODSPELL

April 8 & 9 at 7pm
April 10 at 2pm

NBHS Bronsiegel Auditorium

Tickets & Info: our.show/nbhsgodspell

Conceived and Originally Directed by John-Michael Tebelak
MUSIC AND NEW LYRICS BY STEPHEN SCHWARTZ

GODSPELL—2012 REVISED VERSION
is presented through special arrangement with Music Theatre International (MTI).
All authorized performance materials are also supplied by MTI.
www.mtishows.com




NEW BEDFORD PUBLIC SCHOOLS
presents



DISTRICT-WIDE BAND FESTIVAL 2022



APRIL 13 7 PM

NEW BEDFORD HIGH SCHOOL GYMNASIUM

NEW BEDFORD HS	PAY WHAT YOU CAN
KEITH MS	\$5 recommended
NORMANDIN MS	CHILDREN UNDER 5 FREE
ROOSEVELT MS	
ALL-CITY ELEMENTARY	

For more information, contact:
Lynn Souza, Director of Fine Arts at lsouza@newbedfordschools.org or 508-997-4511 ex. 14104

New Bedford Public Schools
presents

District-Wide CHORAL FESTIVAL



12TH
APRIL
7PM
NBHS Auditorium

PAY WHAT YOU CAN | \$5 recommended | 5 and under free

For more information contact: Lynn Souza, Director of Fine Arts
lsouza@newbedfordschools.org or 508-9974511 ext. 14104